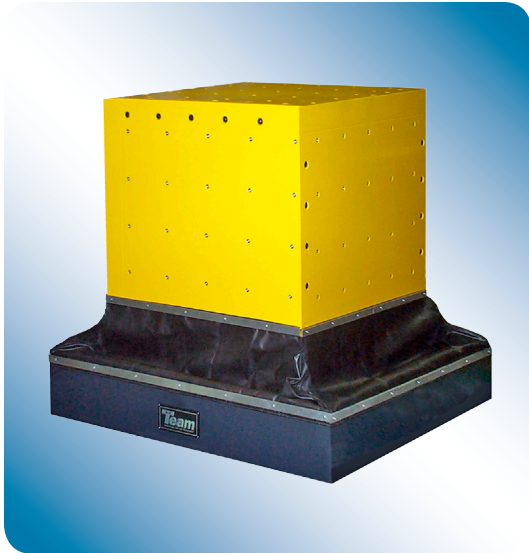
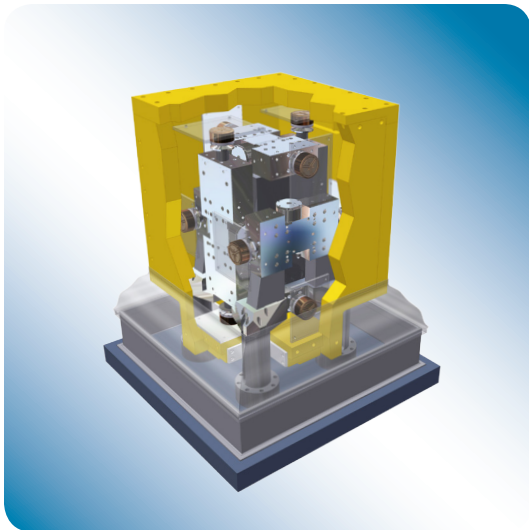




CUBE™ Vibration Tester



Giving you the ability to replicate vibration environments with full 6 degrees of control, Lansmont has taken vibration testing to a whole new level. An advanced technology vibration test system that offers 6 Degrees of Control, the CUBE™ can accurately replicate many vibration environments with precise digital control.



The CUBE™ simulates real-world 6 Degree of Freedom vibration with complete, simultaneous control of the amplitude and phase of all 6 Degrees of Freedom. Offering simultaneous or sequential excitation of test articles in Sine, Random and Time Wave Form Replication, the CUBE™ sets the standard for multiaxis vibration testing.

PERFORMANCE SPECIFICATIONS Model 3-LS

Frequency Range: 0 - 250 Hz.

Maximum Stroke:

<i>Vertical</i>	3.8 in. (97 mm)
<i>Lateral</i>	1.8 in. (46 mm)
<i>Longitudinal</i>	1.8 in. (46 mm)

Rotational Displacement:

<i>Roll</i>	+/- 4 degrees
<i>Pitch</i>	+/- 4 degrees
<i>Yaw</i>	+/- 4 degrees

Peak Sine Force:

<i>Per Actuator</i>	7,000 lbs. (31 kN)
<i>Per Axis</i>	14,000 lbs. (62 kN)

RMS Random Force:

<i>Per Actuator</i>	3,500 lbs. (15.5 kN) rms
<i>Per Axis</i>	7,000 lbs. (31 kN) rms



CUBE™ Vibration Tester



MODEL 3-LS SPECIFICATIONS

PHYSICAL

CUBE Top Mounting Surface	32 x 32 in. (81 x 81 cm)
CUBE Side Mounting Surfaces	32 x 24 in. (81 x 61 cm)
Head Expanders	Up to 60 x 60 in. (152.4 cm x 152.4 cm)
Bare Table Moving Mass	1430 lbs. (648 kg)
First Mode frequency	300 Hz

HYDRAULIC POWER REQUIREMENTS

Hydraulic Power	70 gpm (270 lpm) @ 3000 psi
Electrical Power	125 HP equivalent
Cooling Water	41 gpm (158 lpm) <80°F (26°C)

SYSTEM DRAWING

ISOMETRIC VIEW

