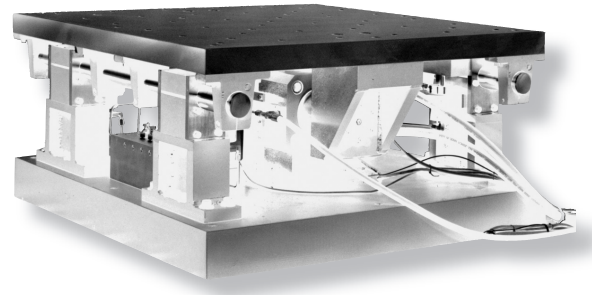


## 6000H Horizontal Vibration Test System

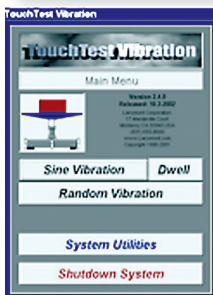
Do you have a need for horizontal vibration? The Lansmont Model 6000H Horizontal Vibration Test System is your solution! This system was designed to perform a wide range of horizontal vibration tests, including sine, random, and Field-to-Lab<sup>®</sup> protocols. From small products to pallet loads, this system can be configured to handle them all. The 6000H vibration system features a rugged hydraulic actuator designed specifically for today's testing profiles, a reliable hydraulic power supply, and Lansmont's extremely popular TouchTest vibration control system. The Model 6000H can also be configured to work with a vertical vibration system, sharing the hydraulic power supply and controls. This feature allows you the versatility of both a horizontal and vertical vibration test system without an investment in redundant power supplies and control systems. Let Lansmont help you configure a Model 6000H horizontal vibration test system that will meet your demands today!



Let Lansmont help you configure a Model 6000H horizontal vibration test system that will meet your demands today!

### 6000H Horizontal Features:

- The 6000H horizontal vibration system has a table size of 36 in. square (91 cm) and has a piston stroke of 6 in. (15.2 cm), capable of handling payloads up to 3,000 lbs. (1,364 kg). Optional table sizes of 48 in. square (122 cm) and 60 in. square (152 cm) are available.
- Windows<sup>™</sup> based vibration control system, including Lansmont's extremely powerful TouchTest Vibration software.
- Random vibration, swept-sine vibration, resonance search and dwell, as well as powerful user-defined profiles all included.
- Fully integrated pump and servo controls, all designed and manufactured by the Lansmont Corporation.
- Field-to-Lab<sup>®</sup> ready. Simple transfer of data from your Lansmont SAVER<sup>™</sup> to your vibration controller for real-world random vibration tests.
- Full range of applications training programs available.
- Worldwide Customer Service department.



### Vibration Testing Benefits:

- Identify design and production defects.
- Increase product ruggedness.
- Reduce packaging costs.
- Eliminate shipping damage.

17 Mandeville Court, Monterey, CA 93940

1-800-LANSMONT • [www.lansmont.com](http://www.lansmont.com)

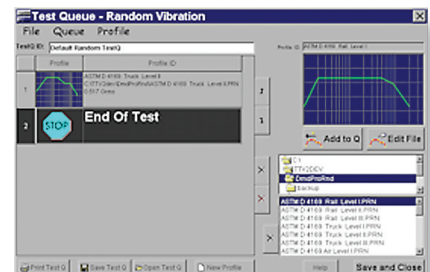
# 6000H Horizontal Vibration Test System

## TECHNICAL SPECIFICATIONS

| PHYSICAL  |   |
|---|---|
| Table Sizes   | 36 in. (91.4 cm) sq.<br>Optional 48 in. Top-Plate (122 cm) sq.<br>Optional 60 in. Top-Plate (152 cm) sq.        |
| Seismic Base Options:                               |   |
| Base-Plate  | 1,500 lbs. (680 kg) Mounts directly to concrete floor.  |
| Optional Seismic Base                               | 8,000 lbs. (3,629 kg)   |
| PERFORMANCE   |   |
| Load Capacity, Maximum                              | 3,000 lbs. (1,361 kg)   |
| Load Capacity, Maximum (with optional 1-G Supports) | N/A *(See Plant Air)  |
| Maximum Stroke (Peak-To-Peak)                       | 6.0 in. Peak-to-Peak (15.2 cm)  |
| Frequency Range                                     | 3 – 100 Hz  |
| Actuator Stall Force at 3,000 psi (207 bar)         | 6160 lbs. (2,794 kgf)   |
| HYDRAULIC POWER SUPPLY                              |   |
| Voltage   | 230 – 460 VAC   |
| Frequency   | 50 – 60 Hz  |
| Phase   | Three Phase   |
| Current   | 21A – 42A   |
| HPS Motor Rating                                    | 20 HP, Standard   |
| POWER REQUIREMENTS, CONTROL                         |   |
| Voltage   | 100 – 220 VAC   |
| Frequency   | 50 – 60 Hz  |
| Phase   | Single Phase  |
| ENVIRONMENTAL                                       |   |
| Cooling Water                                       | 60 Degrees at 6 Gal/Min, for Models 1800–5 – 10000<br>(15.5 Degrees C at 22.7 L/Min, for Models 1800–5 – 10000) |
| Plant Air (*)                                       | Not Required  |

### TouchTest Vibration Controls:

- Available in either Bench-Top or Full "System Station" Configurations. Both Options have identical functionality; the System Station offers a convenient, stylish enclosure for controls.
- Extremely powerful, Windows™ based software.
- Reliable, fully-integrated pump/servo controls.
- Intuitive interface and full-featured help files make machine operation simple.
- Quick, easy data upload from Lansmont field data recorders makes Field-to-Lab® simulations a snap.
- Easy sharing of data via e-mail, internet, and export to other popular programs such as Word™ and Excel™.



**Lansmont**  
Corporation