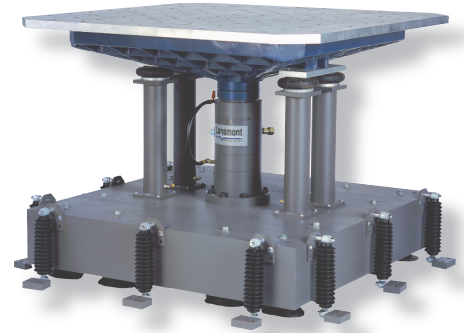


7000 Vibration Test System

Lansmont's Model 7000 Vibration Test System was designed for heavy payloads. If you are looking for a system which will handle heavier payloads than our 1800 vibration test system, but you do not really have a need for the large stroke of our 6000 vibration test system, our Model 7000 could be the perfect solution. The 7000 features a rugged hydraulic actuator designed specifically for today's testing profiles, a reliable hydraulic power supply, and Lansmont's extremely popular TouchTest vibration control system. Let Lansmont help you configure a Model 7000 vibration test system that will meet our demands today!



7000 Features:

- Extremely versatile, the 7000 can be configured with table sizes from 36 in. square (91.4 cm) to 60 in. square (152 cm). It has a piston stroke of 2.5 in. (6.4 cm) and can handle payloads up to 4,000 lbs. (1,818 kg).
- Windows™ based vibration control system, including Lansmont's extremely powerful TouchTest Vibration software.
- Random vibration, swept-sine vibration, resonance search and dwell, repetitive bounce and powerful user-defined profiles all included.
- Fully integrated pump and servo controls, all designed and manufactured by the Lansmont Corporation.
- Field-to-Lab® ready. Simple transfer of data from your Lansmont SAVER™ to your vibration controller for real-world random vibration tests.
- Full range of applications training programs available.
- Worldwide Customer Service department.



Vibration Testing Benefits:

- Identify design and production defects.
- Increase product ruggedness.
- Reduce packaging costs.
- Eliminate shipping damage.

17 Mandeville Court, Monterey, CA 93940

1-800-LANSMONT • www.lansmont.com

7000 Vibration Test System

TECHNICAL SPECIFICATIONS

PHYSICAL	
Table Sizes	36 in. (91 cm) – 60 in. (152 cm) sq.
Seismic Base Options	8,000 lbs. (3,629 kg) – 12,000 lbs. (5,443 kg)
PERFORMANCE	
Load Capacity, Maximum	2,200 lbs. (998 kg)
Load Capacity, Maximum (with optional 1-G Supports)	3,900 lbs. (1,769 kg) *(See Plant Air)
Maximum Stroke (Peak-To-Peak)	2.5 in. (6.4 cm)
Frequency Range	3 – 300 Hz
Actuator Stall Force at 3,000 psi (207 bar)	9,172 lbs. (41 kN)
HYDRAULIC POWER SUPPLY	
Voltage	200 – 460 VAC
Frequency	50 – 60 Hz
Phase	Three Phase
HPS Motor Rating	20 HP, Standard
POWER REQUIREMENTS, CONTROL	
Voltage	100 – 220 VAC
Frequency	50 – 60 Hz
Phase	Single Phase
ENVIRONMENTAL	
Cooling Water	60 Degrees F at 6 Gal/Min. for Models 1800–5 – 10000 (15.5 Degrees C at 22.7 L/Min. for Models 1800–5 – 10000)
Plant Air (*)	100 psi (6.9 bar) for all Vibration Machines utilizing the 1-G Support option.

TouchTest Vibration Controls:

- Available in either Bench-Top or Full "System Station" Configurations. Both Options have identical functionality; the System Station offers a convenient, stylish enclosure for controls.
- Extremely powerful, Windows™ based software.
- Reliable, fully-integrated pump/servo controls.
- Intuitive interface and full-featured help files make machine operation simple.
- Quick, easy data upload from Lansmont field data recorders makes Field-to-Lab® simulations a snap.
- Easy sharing of data via e-mail, internet, and export to other popular programs such as Word™ and Excel™.

