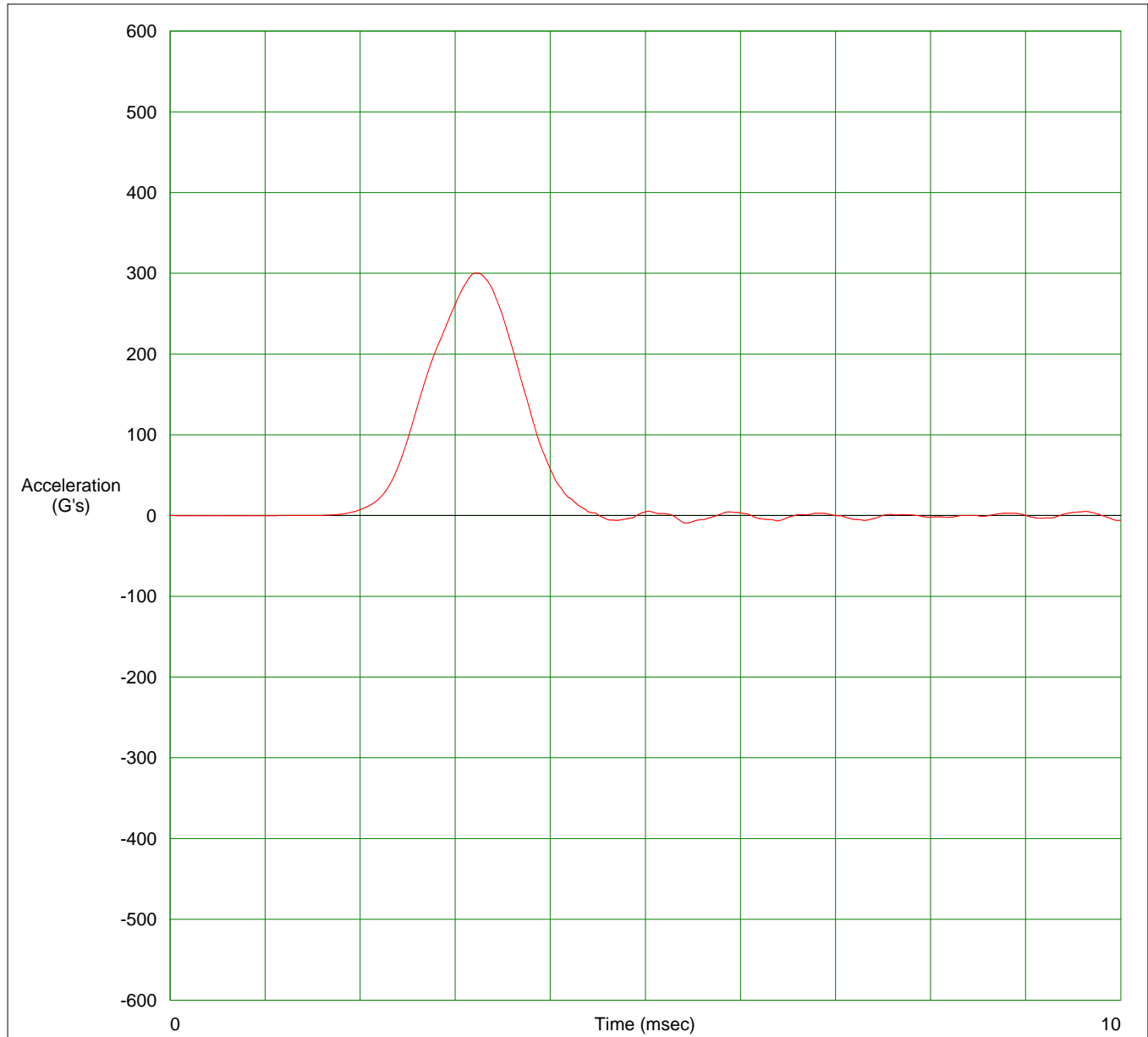




**TEST
PARTNER**

Channel Description:	G's	msec	In/S	Filter Hz	Max G's	Min G's
Ch 1 Channel 1	300.28	1.88	129.76	1381.22	300.28	-9.28

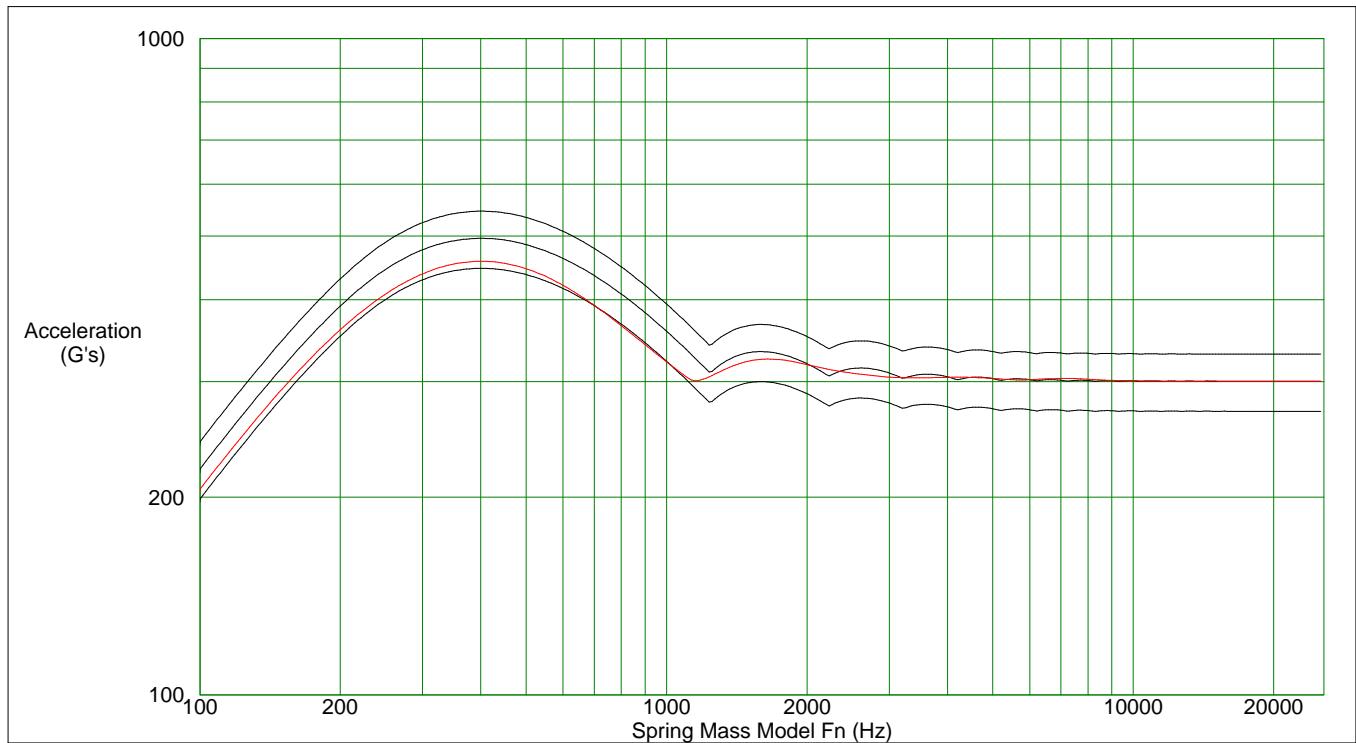


MACHINE DROP HEIGHT: 14 INCHES

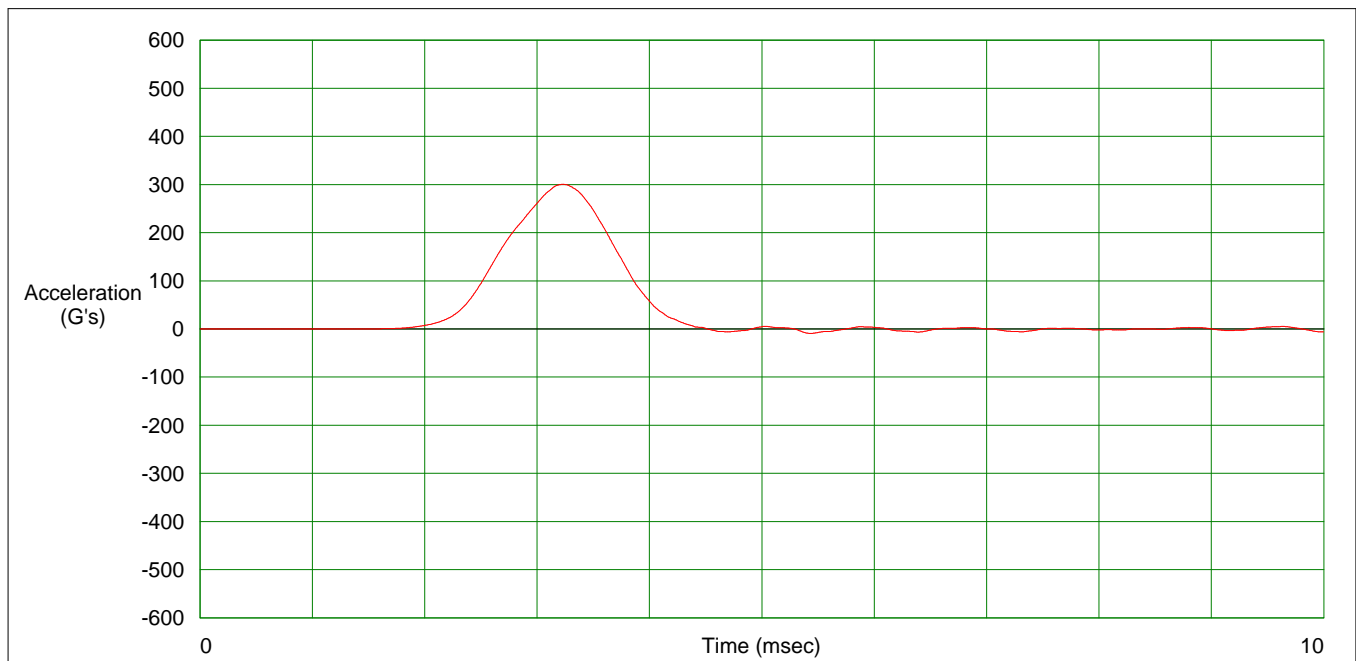


**TEST
 PARTNER**

SRS 1	SRS Type	Damping	Max Accel (G's)	Fn at Max (Hz)	Min Accel (G's)	Fn at Min (Hz)	Marker Fn (Hz)	Abs Accel (G's)	Max Accel (G's)	Min Accel (G's)
Composite	0.05	457.57	400.00	-371.45	331.54	-	-	-	-	-



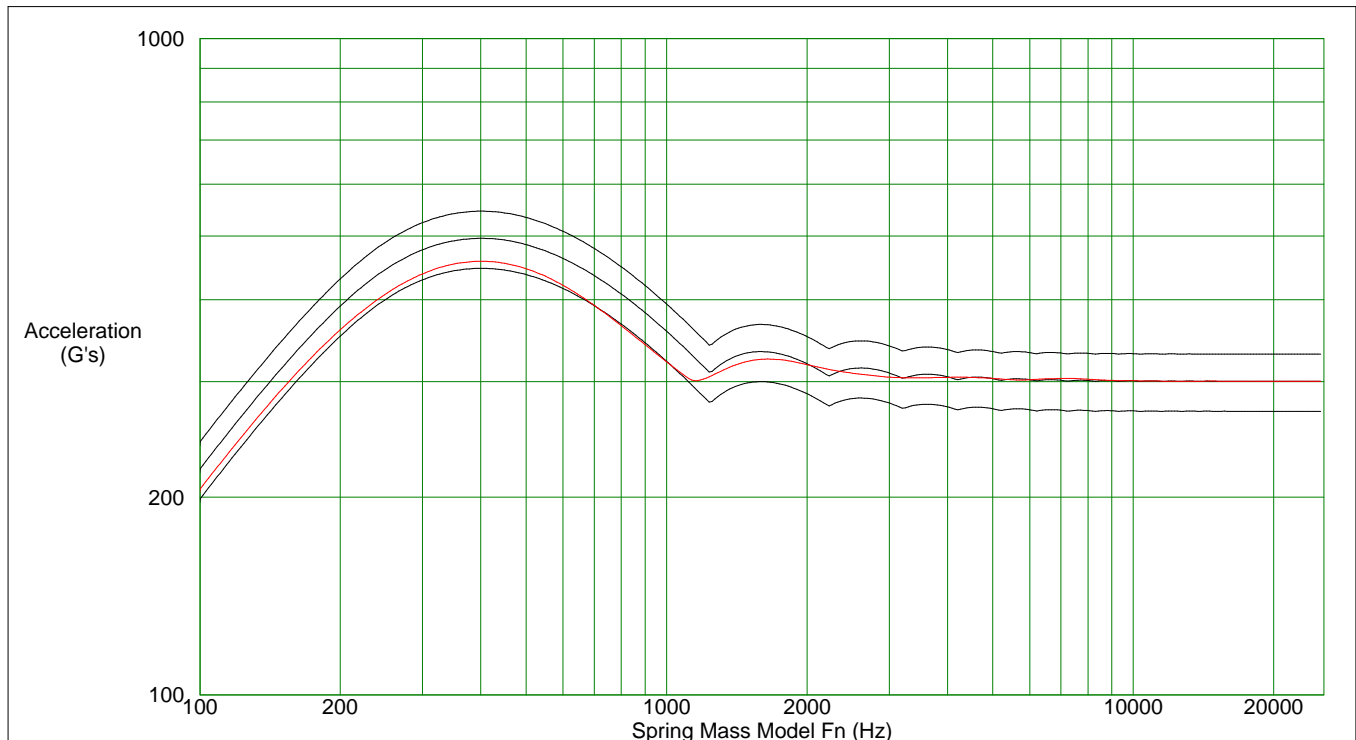
Channel Description:	G's	msec	In/S	Filter Hz	Max G's	Min G's
Ch 1 Channel 1	300.28	1.88	129.76	1381.22	300.28	-9.28





**TEST
 PARTNER**

SRS 1	SRS Type	Damping	Max Accel (G's)	Fn at Max (Hz)	Min Accel (G's)	Fn at Min (Hz)	Marker Fn (Hz)	Abs Accel (G's)	Max Accel (G's)	Min Accel (G's)
Composite	0.05	457.57	400.00	-371.45	331.54	-	-	-	-	-



Fit Channel 1	Target	Status	Analyzed Target:	Acceleration	Duration	Delta V
	Half Sine 300.28 G's 1.88 msec	SRS Out Band +/- 10% Tolerance 0.05 Composite	Measured Input:	300.28 G's 300.28 G's	1.88 msec 1.78 msec	129.76 In/S 138.75 In/S

